

Milton Keynes RCN Branch Newsletter

July 2024

BRANCH COMMITTEE

Branch Chair

Secretary

Treasurer

NSW Committee Member - Elizabeth Gleeson

Nurse/Student Committee Member -

RCN Congress 2024

...the first of these is the fact that the ...

...the second of these is the fact that the ...

...the third of these is the fact that the ...

...the fourth of these is the fact that the ...

...the fifth of these is the fact that the ...

...the sixth of these is the fact that the ...

...the seventh of these is the fact that the ...

...the eighth of these is the fact that the ...

...the ninth of these is the fact that the ...

...the tenth of these is the fact that the ...

...the eleventh of these is the fact that the ...

...the twelfth of these is the fact that the ...

...the thirteenth of these is the fact that the ...

...the fourteenth of these is the fact that the ...

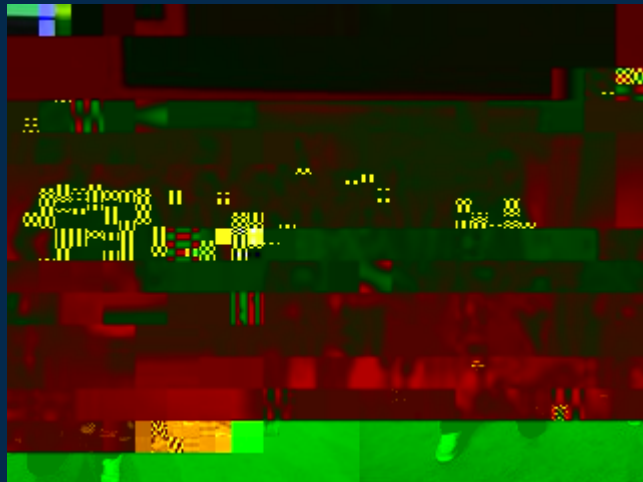
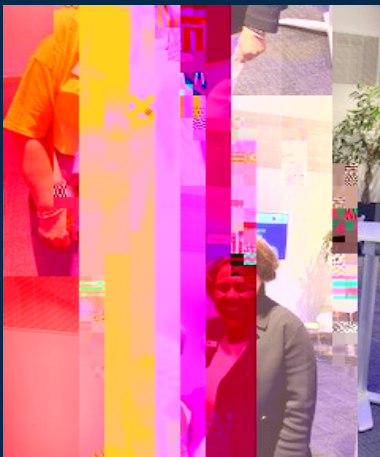
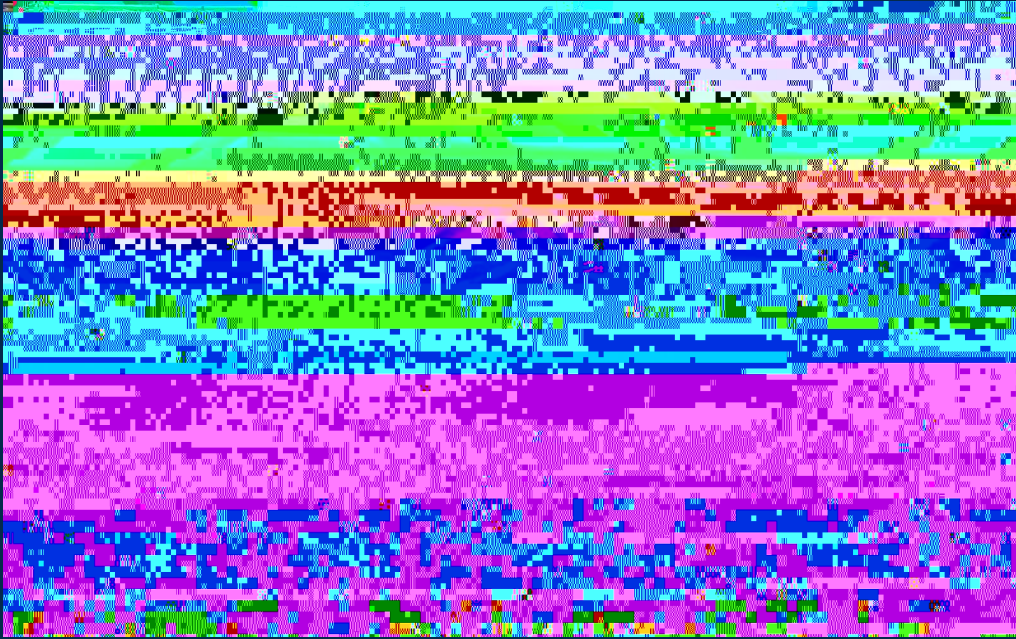
...the fifteenth of these is the fact that the ...

...the sixteenth of these is the fact that the ...

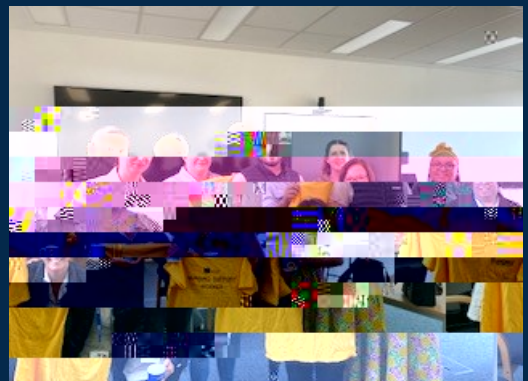
...the seventeenth of these is the fact that the ...

...the eighteenth of these is the fact that the ...

RCN Congress 2024 Gallery



The NSW members at MKUH who were unable to attend Congress received gifts from the South East member of the Nursing Support Workers Committee. If you are a NSW member and would like a mug please contact: sharon.mitchel@reps.rcn.org.uk (while stocks last!)







**Student Nurses, Nurses, Healthcare Assistants,
Assistant Practitioners, Nursing Associates
and retired members - are you a budding writer? Would you like to
write an article or share pictures of your RCN activity?**

**Then please contact:
sharon.mitchel@rep.rcn.org.uk**

**You can find out more about the branch and get in touch by going to
the Milton Keynes branch page at rcn.org.uk/southeast**

