



Changes made to shared parental leave and pay

The RCN, alongside other health unions, has negotiated improvements to shared parental leave entitlements for NHS staff in England and Wales

Shared parental leave is designed to give parents more flexibility in how to share the care of their child in the first year following birth or adoption. Parents will be able to share a pot of leave and can decide to take time off work together and/or take turns to have periods of leave to look after the child.

Before 1 April, NHS staff were only entitled to basic statutory pay for shared parental leave, rather than enhanced occupational pay such as for maternity leave. This meant they were often financially worse off if they chose to split their leave.

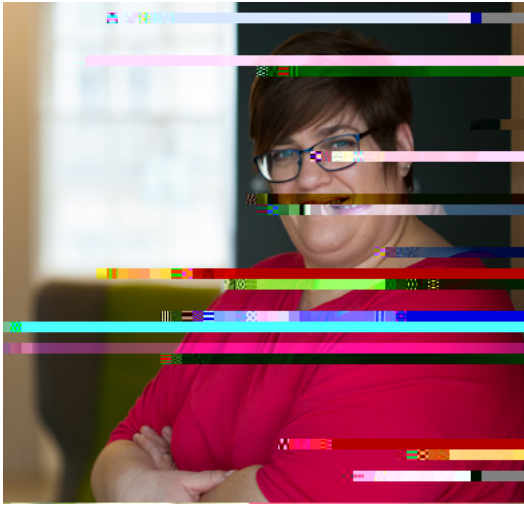
From 1 April, shared parental pay in England and Wales has been enhanced to the same

Nurse shortages could double, thinktanks warn

VIEWS

Accountability for safe staffing

ASK AN
ADVISER



Support worker regulation

The decision by the Nursing and Midwifery Council (NMC) to regulate nursing associates (NAs) is an opportunity to campaign for regulation for assistant practitioners (APs) and other health care support workers. Regulating, clarifying and standardising support roles will benefit patients and staff in the long run.

At the moment if an unregulated practitioner makes a serious error in their practice they may be dismissed. Worryingly though, they could start a new job caring for patients

FEATURE

Do you have what it takes?

With elections underway for the RCN Congress Agenda Committee, Maureen Dolan encourages fellow activists to consider standing for this important role

Are you keen to influence the national nursing debate? To shape the direction of the RCN? To give a voice to fellow members? If so, there could be a role for you on the RCN Congress Agenda Committee.

As anyone who has been will testify, Congress is massive. Thousands attend, hundreds speak

issc? I(e)-9(a)-3(k)-0(s a)33m (i)-s7(r y)4(o)8(u o)9(e)04n (s)-3nf-71(i)(d)-54(s a)5)-8 scn/G/00sc b)-7(e)-9(en w)-01 t)-184-25n/G/00scd)-6181 in/G/(e t)-0(hs)-6(t)s)-1(c)-9(7o)8(e)-5)9scn/G/g (e)-7(5(a)ng)-3.9(o)8n))6(s a)-6(n)ue-5)1g) 5)36.c.9(t)-7-9(a)-3(k)-0(sGSD)7P1.95-111 Cf C

Lending a hand

